

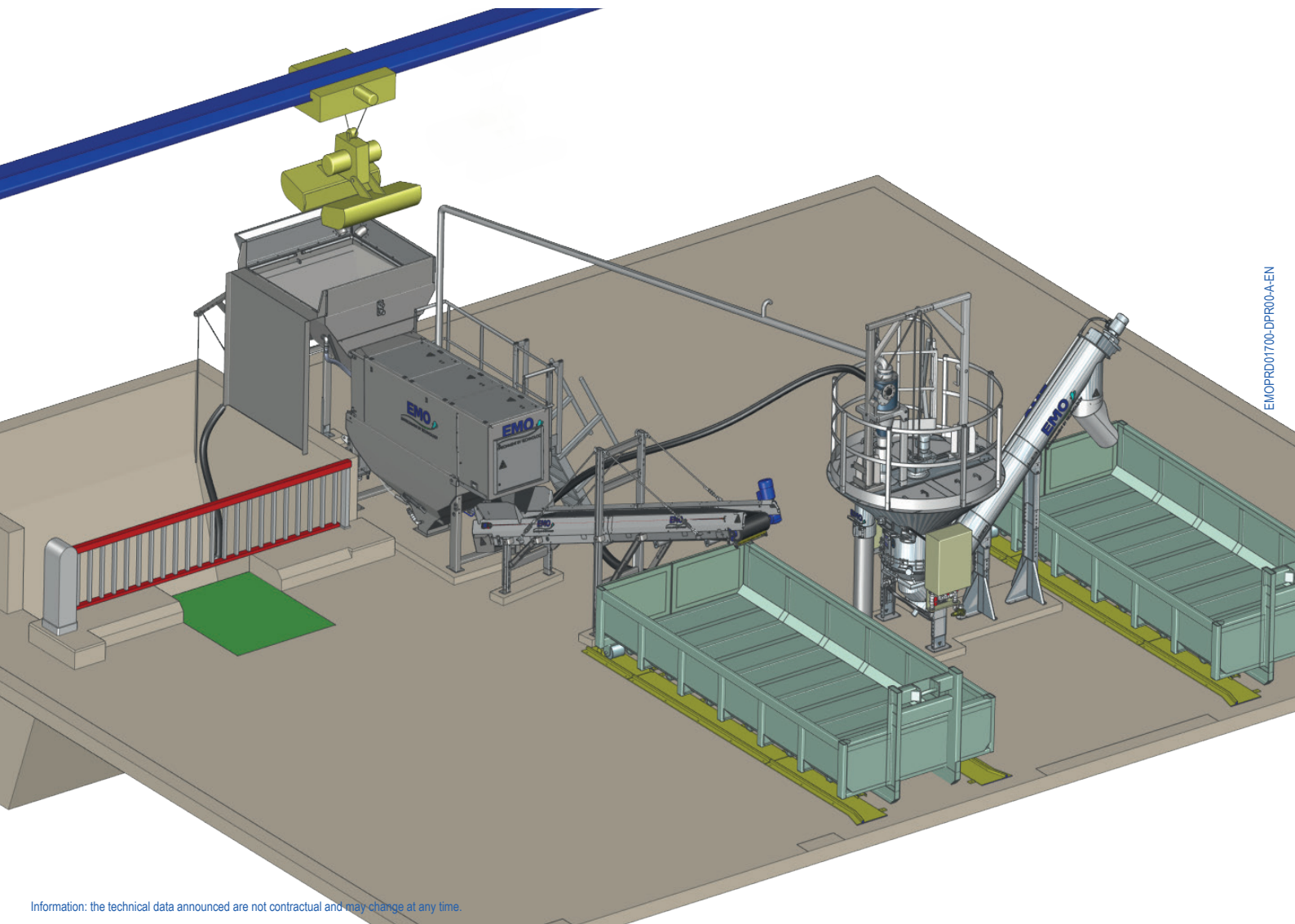


Recovery, transfer, screening and washing

This equipment is used for solids/liquid separation in the pretreatment phase of the sewage collected by «sludge gulper» trucks during sewers network cleaning campaign and is fully automated.

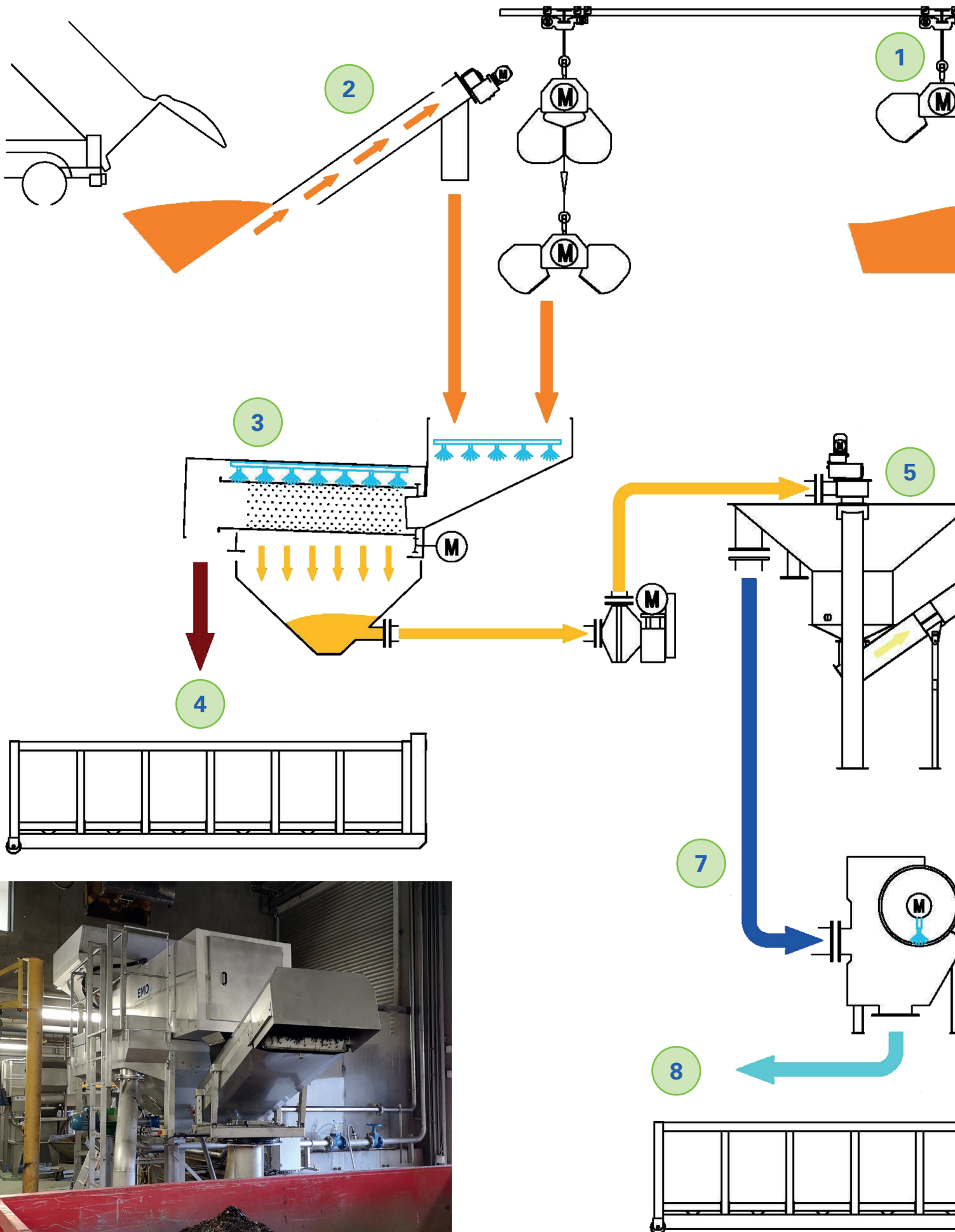
- Effluent taken by grap
- Sewage regulated feed line
- Screening by 10 mm

- Sand washing < 5% OM (organic matters)
- Sieving of washing water
- Minimum maintenance
- Frame: stainless steel 304L or 316L

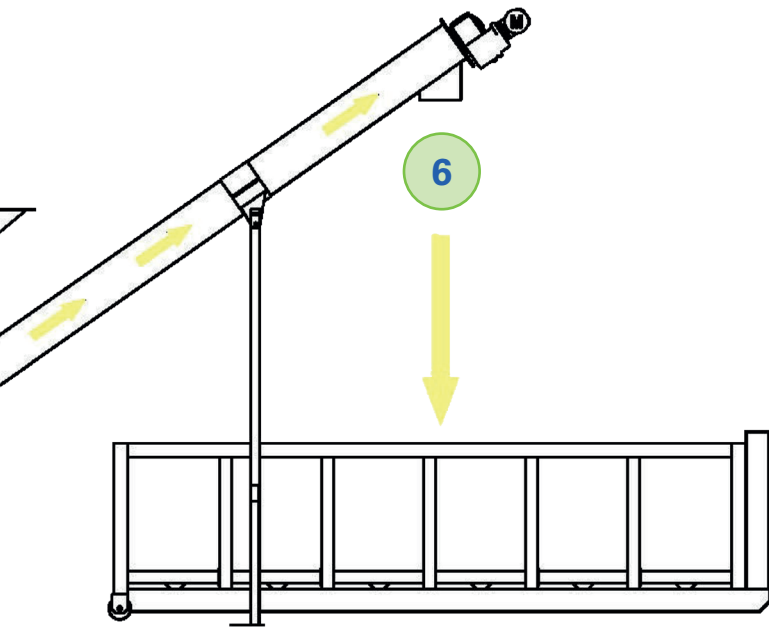
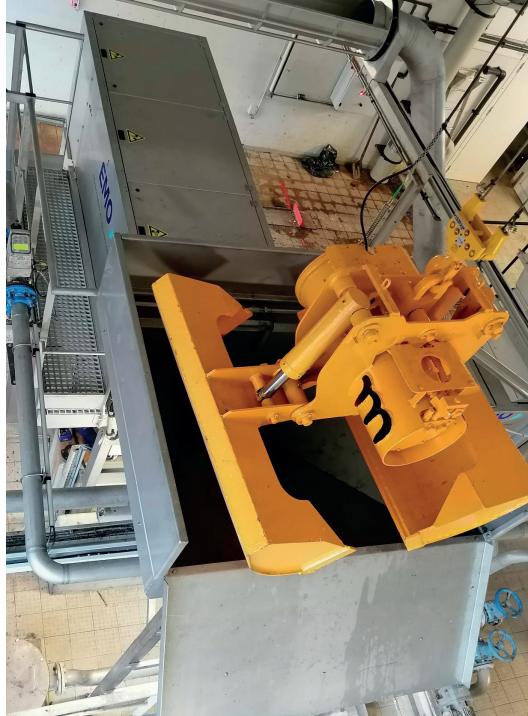
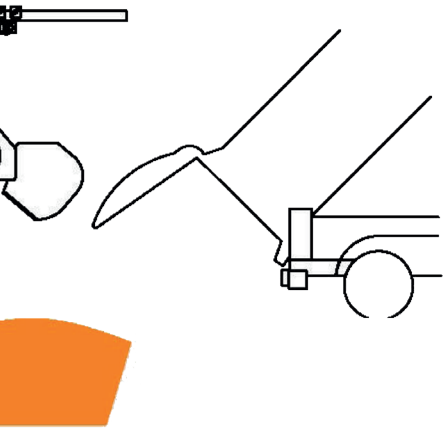


EMOPRD01700-DPR00-A-EN

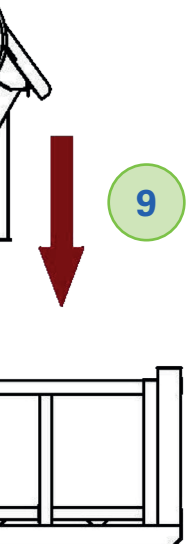
This unit is designed to remove solids and sands from the wastewater collected by hydro in the pre-treatment phase.



Recycling trucks



- 1 Effluent taken by grap
- 2 An alternative way is effluent taken by screw conveyor
- 3 Screening by Trommel
- 4 Screening waste after Trommel
- 5 Sand washer LS
- 6 Clean sand
- 7 Dirty water and organic matters
- 8 Sieved wash water transported to all-water plant
- 9 Sieving





OPERATING PRINCIPLE

The treatment unit is composed of several equipment for the **separation** and **washing** phases. Hydrocleaning trucks dump their loads into a concrete pit.

Effluent is then picked up by a grab or a screw conveyor. Washed bulky waste (> 10mm) is evacuated directly into a tank or by a belt conveyor.



The thin matter (OM+Sand) is taken up from the Trommel by a pump with the washing water and transferred to the **sand washer**.

The sand washer separates and extracts the organic matter from the sand. The sand is squeezed out and removed by a transfer screw.

The wash water, loaded with thin organic particles, can be sieved before being discharged into the conventional wastewater treatment network.

This equipment is matched to each other according to the required treatment rate.



EMO sas,

4 rue Lépine – PA La Richardière, BP 53209, 35530 Noyal sur Vilaine, France
+ 33 (0)2 99 86 02 03 - emo@emo-france.com

www.emo-france.com

Certification ISO9001 - ISO14001



A company of **SEMOSIA**
GROUP